

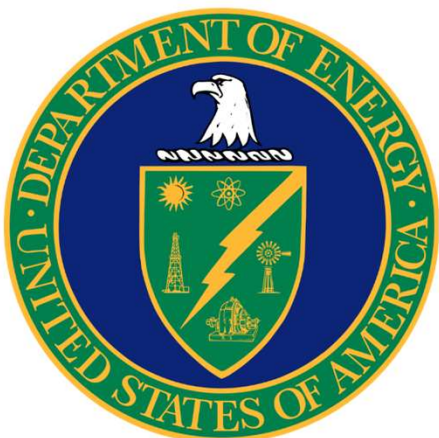
Finding Internship Opportunities Across the Federal Government

If you're seeking internship opportunities within the federal government, consider exploring the following platforms and programs:

1. **Zintellect** – <https://zintellect.com/>
Zintellect hosts a wide range of internship and fellowship programs offered by various federal agencies. To get started, create a profile, upload your resume, and apply to any programs that align with your interests.
2. **DOE STEM** – <https://www.energy.gov/topics/doe-stem>
This is your comprehensive resource for STEM-related opportunities provided by the U.S. Department of Energy (DOE).

Highlighted Opportunities:

1. **NETL Internship Programs** – [Current Research Opportunities | Science Education Programs at NETL](#)
These programs accept applications on a rolling basis. Be sure to check frequently, as new opportunities are posted regularly.
2. **DOE Competitions** – [Competitions, Challenges, and Industry Prizes | NREL](#)
Many of these are hosted through the [American-Made Challenges](#) initiative, offering hands-on experience in solving real-world energy issues.
3. **DOE Scholars Program** – Search "DOE Scholars" on [Zintellect](#)
This program offers both summer and year-round positions. It provides students and recent graduates with the opportunity to gain valuable experience and contribute to DOE's mission.



Student Programs

How can you join the FECM action?



MICKEY LELAND

ENERGY FELLOWSHIP PROGRAM

U.S. DEPARTMENT OF ENERGY • OFFICE OF FOSSIL ENERGY AND CARBON MANAGEMENT



WHO WAS GEORGE THOMAS “MICKEY” LELAND?



- America's most effective spokesman for hungry people in the U.S. and throughout the world.
- Served six terms in the Congress
- Focused on issues of health and hunger. Rallied support that resulted in both public and private action.



Fossil Energy and
Carbon Management

energy.gov/fecm

MICKEY LELAND ENERGY FELLOWSHIP (MLEF)



- A **10-week** summer research program for Science, Technology, Engineering, and Math (STEM) students
- Receive **mentorship** from DOE scientists and engineers
- Provide **hands-on experience** complementing course of study and connect **theory to practice**
- Increase **confidence**, enhance **communications skills**, and promote **critical thinking** and **problem solving**



Fossil Energy and
Carbon Management

energy.gov/fecm

64

MLEF PROGRAM



www.energy.gov/fe/mlef



ELIGIBILITY

- Be at least age 18
- Be a U.S. Citizen
- Have a minimum 2.8 GPA
- Be enrolled full-time in a STEM degree program at the Associate, Bachelor's or Master's level at the time of application.
- Must be a college sophomore or higher

REQUIREMENTS

- Commit for the full 10-week program
- Attend orientation and present research findings at the Technical Forum

**Summer 2025 applications
will open in September 2024**



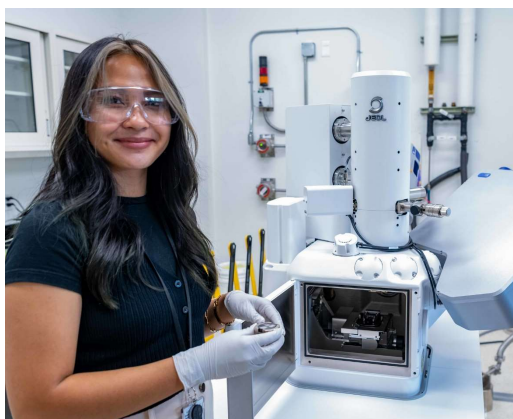
U.S. DEPARTMENT OF
ENERGY

Fossil Energy and
Carbon Management

energy.gov/fecm

65

MLEF PROGRAM



STIPEND*

- Undergraduate students: \$7,500 for 10-weeks
- Master's students : \$8,500 for 10-weeks

*Some participants may be eligible to receive a housing and travel allowance.



U.S. DEPARTMENT OF
ENERGY

Fossil Energy and
Carbon Management

energy.gov/fecm

66

PROJECT EXAMPLES



Topics Researched

- Methane emission monitoring
- Wastewater analysis
- Subsurface injection of H₂ or CO₂
- Carbon capture, conversion, and transport
- Extracting rare earth elements and critical minerals
- Sensors and Controls

Skills Developed

- DFT calculations
- Experimental design
- Computational material design / fluid mechanics
- Project finance
- Machine learning & Artificial Intelligence
- SEM measurements



Fossil Energy and
Carbon Management

energy.gov/fecm

67

MLEF PROGRAM



www.energy.gov/fe/mlef



CREATE ZINTELLECT PROFILE

- Contact information
- Educational and employment history
- Resume

MLEF APPLICATION

- Two short-answer essay questions
- Unofficial transcripts
- Contact information for two references



Fossil Energy and
Carbon Management

energy.gov/fecm

68

APPLICATION TIPS

To increase your chances of being selected for the MLEF program, we recommend:

- Reading the eligibility criteria **carefully** to make sure you can be considered for this program.
- Spending the **necessary time** on your essay responses and your resume.
- Having your resume and essays **reviewed**.
- **Asking** questions! Contact us at mlef@hq.doe.gov if something isn't clear.



FEDERAL RESUME TIPS

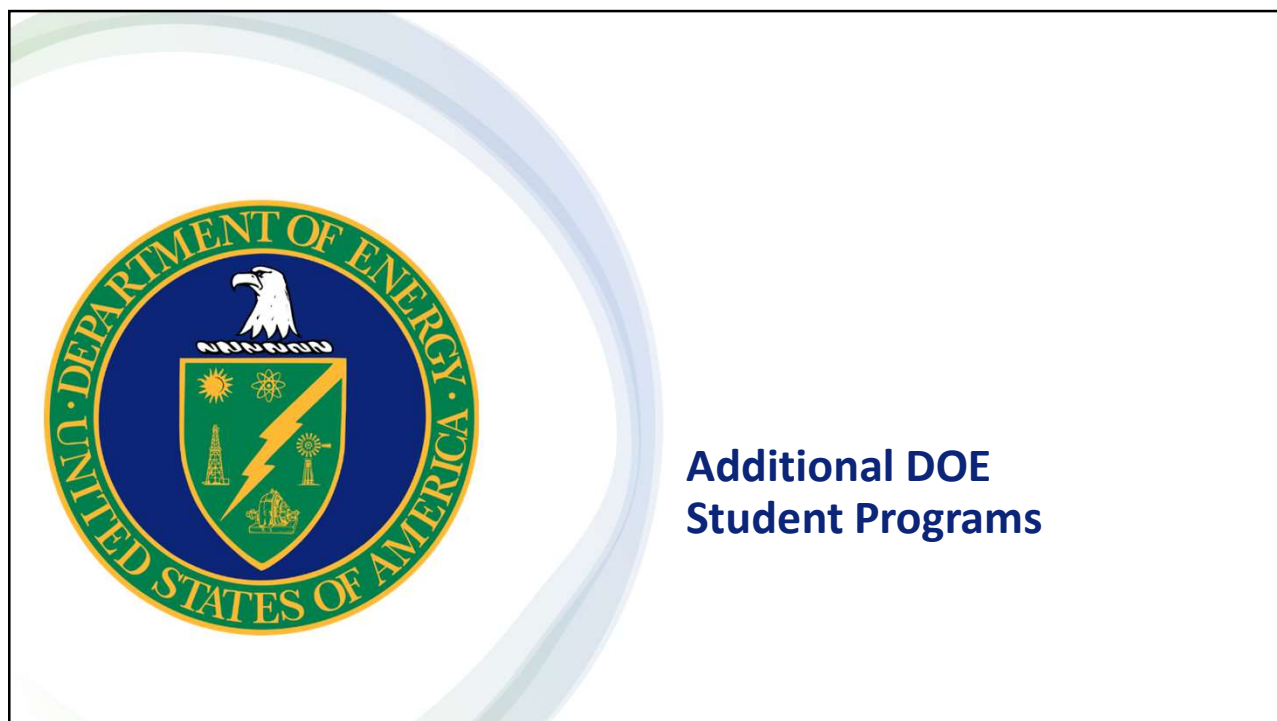


What should I include in my federal resume?

FEDERAL GOVERNMENT RESUMES

- Provide more details
- Capture all pertinent experiences. Include non-paid experiences
- Articulate skills and quantify accomplishments
 - (Input + Output = Outcome)
- Use action verbs
- Tailor resume to the job announcement.
 - (Avoid submitting a generalized resume to multiple job announcements.)





Finding Opportunities



Zintellect

APPLY TO PROGRAMS ACROSS THE FEDERAL GOVERNMENT

- Search opportunities by agency, academic level, citizenship, & more



- Create a profile
- Upload your resume
- Apply to any program that interests you

DOE STEM

YOUR ONE-STOP SHOP FOR STEM-BASED OPPORTUNITIES FROM THE DOE

- Search opportunities by discipline, location, DOE office, & more
- Access resources across the DOE
- Read about past participants
- See our calendar of events





U.S. DEPARTMENT OF ENERGY

Fossil Energy and Carbon Management

energy.gov/fecm

72

NETL INTERNSHIP PROGRAMS

Opportunities for current students and recent graduates

PROFESSIONAL INTERNSHIP PROGRAM (PIP)

- Current undergraduate or graduate student in good standing at a regionally accredited college/university or a post-baccalaureate within 2 years of graduation
- Minimum GPA of 2.5/4.0
- At least 18 years of age at the time of the appointment



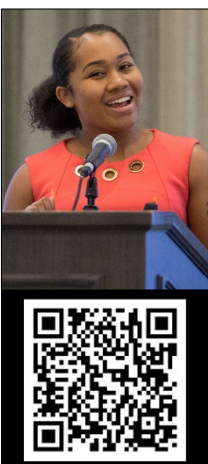
POSTGRADUATE RESEARCH PROGRAM (PGRP)

- Have earned/about to receive master's or doctoral degree
- Graduate who received master's degree within the last 3 years or doctorate within the last 5 years

Search "PIP" or "PGRP" on Zintellect
www.netl.doe.gov/education/internships



SCIENCE, TECHNOLOGY & POLICY (STP) Program



Projects are at the forefront of the clean energy transition, helping to address the climate crisis through a one-year fellowship with FECM.

The STP Program provides an opportunity for candidate to participate in technical and policy-related FECM projects.

PARTICIPANTS MUST FALL INTO ONE OF THE FOLLOWING CATEGORIES:

- **Student:** Currently enrolled undergraduate or graduate student in an accredited U.S. college, university, technical institute, or must be in an institution approved by FECM. Part-time students may be considered with sponsor approval.
- **Postgraduate:** Candidate must have received an associate's, bachelor's, master's or doctorate degree.

Search "STP" on Zintellect



Research Experience in Carbon Sequestration (“RECS” Program)



<http://www.recs-ccus.org/>

Premier CCUS education and training experience and career network for graduate students and early career professionals in the U.S.

- **Schedule:** Occurs annually, typically lasts 7-10 days.
- **Faculty:** Pioneering CCUS experts from national labs, industry, and academia are part of the RECS faculty and network.
- **Funding:** Covers full tuition for students.
- **Eligibility:** Applicants must be U.S.-based. Early career professionals and PhD or graduate students. Required to commit to the full program.



DOE Competitions

Hosted by the National Renewable Energy Laboratory (NREL)

- Many through American Made Challenges”

Some topics include:

- Algae
- Wind
- CyberForce
- Geothermal
- Hydropower
- Solar Decathlon
- Marine Energy

<https://www.nrel.gov/about/compete.html>

<p>MAKE IT Prize</p> <p>Prize Pool \$30 million in prizes</p> <p>Open to all - Submission Deadline 02/15/2024</p>	<p>Building Envelope Innovation Prize</p> <p>Prize Pool \$2 million in prizes</p> <p>Open to all - Submission Deadline 06/13/2024</p>	<p>Power at Sea Prize</p> <p>Prize Pool \$1.7 million in prizes</p> <p>Open to all - Submission Deadline 07/26/2024</p>
<p>Re-X Before Recycling Prize</p> <p>Prize Pool \$5.6 million in prizes</p> <p>Open to all - Submission Deadline 03/12/2024</p>	<p>Digitizing Utilities Prize Round 2</p> <p>Prize Pool \$1.85 million in prizes</p> <p>Open to all - Submission Deadline 05/07/2024</p>	<p>SOLVE IT Prize</p> <p>Prize Pool \$5 million in prizes</p> <p>Open to all - Submission Deadline 04/12/2024</p>

DOE Office of Science Programs

COMMUNITY COLLEGE INTERNSHIP (CCI) PROGRAM

<https://orise.orau.gov/ornl/undergraduates/cci/default.html>

- Currently enrolled as a full-time student at a community college or accredited two-year college and completed at least one semester at the time of applying.
- Fall, Spring and Summer terms

SCIENCE UNDERGRADUATE LABORATORY INTERNSHIP (SULI) PROGRAM

<https://science.energy.gov/wdts/suli/>

- Provides undergraduate students with a research experience at a DOE laboratory.
- Fall, Spring and Summer terms

OFFICE OF SCIENCE GRADUATE RESEARCH (SCGSR) PROGRAM

<http://science.energy.gov/wdts/scgsr>

- Requires full-time attendance at host DOE laboratory.
- Applicants must have obtained the Ph.D. candidacy.

Search each
program
on
Zintellect!



Fossil Energy and
Carbon Management

energy.gov/fecm

77

Programs for All Majors

DOE Scholars

- Summer and year-round positions available
- Open to current students (all levels) and recent graduates of all majors
- Stipend + travel and housing assistance provided
- [Search “DOE Scholars” on Zintellect](#)

Minority Education Institution Student Partnership Program (MEISPP)

- Summer program
- Open to undergraduate and graduate students of all majors from MSIs
- Stipend, and travel and housing assistance provided
- [Search “MEISPP” on Zintellect](#)



Fossil Energy and
Carbon Management

energy.gov/fecm

78

Contact Us



Caleb Woodall
UTR Program Manager
caleb.woodall@hq.doe.gov



Cristina Cordero
Samantha Kramer
MLEF@hq.doe.gov
www.energy.gov/fe/mlef



**APPLY TO PROGRAMS ACROSS THE
FEDERAL GOVERNMENT**



**YOUR ONE-STOP SHOP FOR STEM-BASED
OPPORTUNITIES FROM THE DOE**



Fossil Energy and
Carbon Management

energy.gov/fecm